



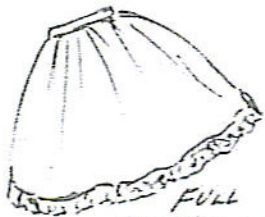
BASIC SHEATH DRESS



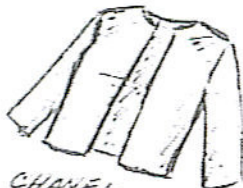
PANTIES



SHEATH HALF-SLIP



FULL PETTICOAT



CHANEL JACKET



A-LINE SKIRT

PANTIES: Make from white or pastel colored chiffon or tricot, seaming sides and bottom at crotch, and center back. Finish placket in back with tiny snap or hook, and gather waistline to fit doll, finishing with narrow bias of same fabric for waistband. Hem leg holes, and add very narrow lace edge if desired.

SHEATH HALF-SLIP: Make from white or pastel tricot or chiffon, seaming sides and back, finishing placket and close with snap or hook. Gather waistline to fit doll and use narrow bias of same fabric for waistband. Add $\frac{1}{4}$ or $\frac{1}{2}$ inch wide lace edge to hemmed bottom of slip.

FULL PETTICOAT: Cut from sheer fine cotton or nylon, tricot or shiffon, a piece 4" by 14", seaming up back on 2" of the 4" edge. Finish the remaining 2" as placket and close with snap or hook. Gather to fit waistline and add narrow bias of matching fabric for waistband. Add $\frac{1}{4}$ or $\frac{1}{2}$ inch wide lace to hemmed bottom edge.

CHANEL JACKET: Cut from black or beige (or whatever oth basic color you prefer for the wardrobe). Make

con
on
pg.

(jacket cont.) darts, and seams at shoulders. Ease in sleeves, then stitch side seams and sleeves in one.

Cut a lining of matching or contrasting color in fine lining fabric, sew in same way, then stitch both together at neckline and front edges. Turn inside out and blind-stitch a turned-in hem on bottom edge, and sleeve edges.

A-LINE SKIRT: Cut from basic color to match jacket, seam up back, finishing off placket with snap or hook closing. Attach waistband, then hem bottom of skirt.